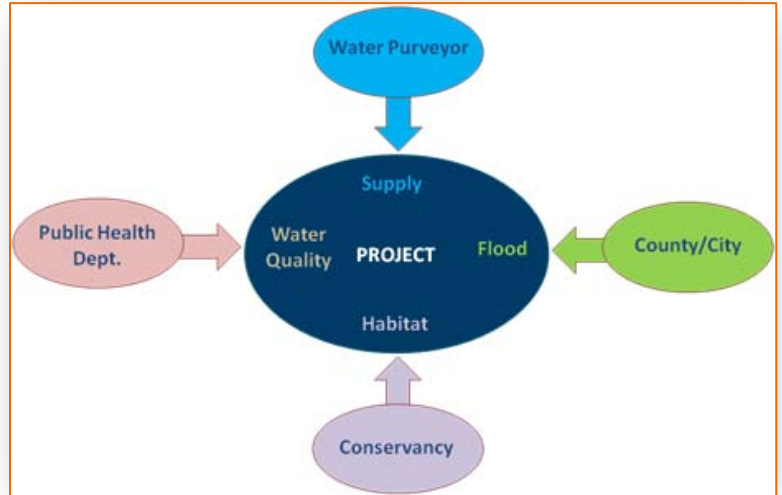


Antelope Valley Integrated Regional Water Management

What is integrated regional water management?

Integrated Regional Water Management (IRWM) is a collaborative effort to manage all aspects of water resources in a region. IRWM crosses jurisdictional, watershed, and political boundaries; involves multiple agencies, stakeholders, individuals, and groups; and attempts to address the issues and differing perspectives of all the entities involved using mutually beneficial solutions.

This State program encourages local agencies to work cooperatively to manage local and imported water supplies to improve quality, quantity, and reliability.

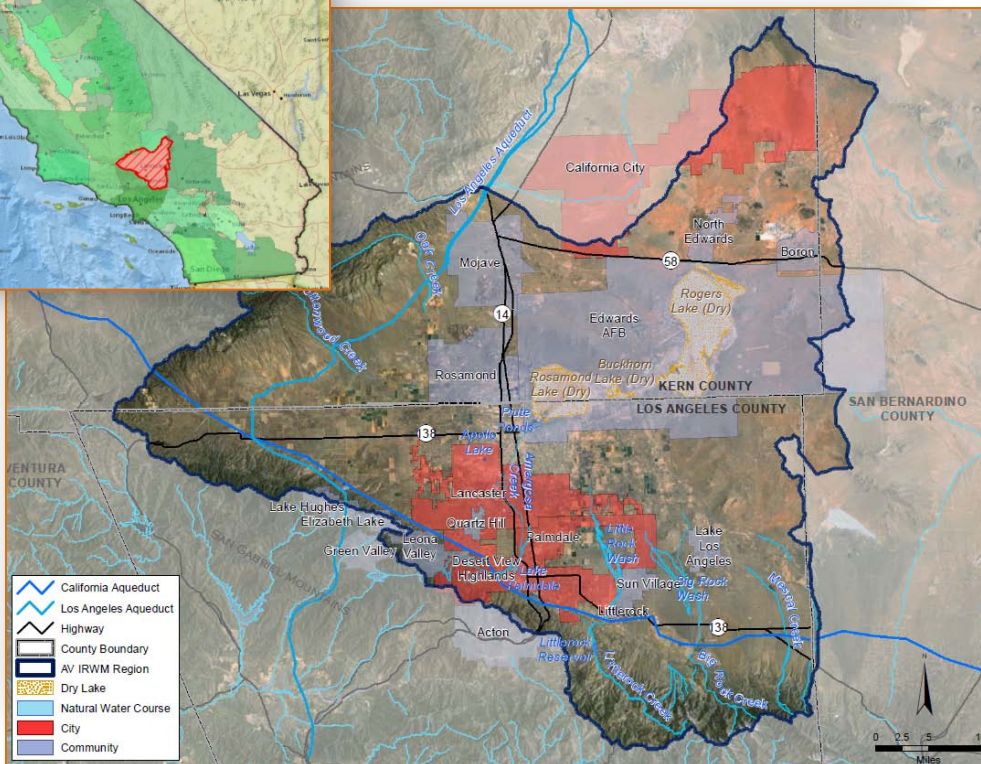
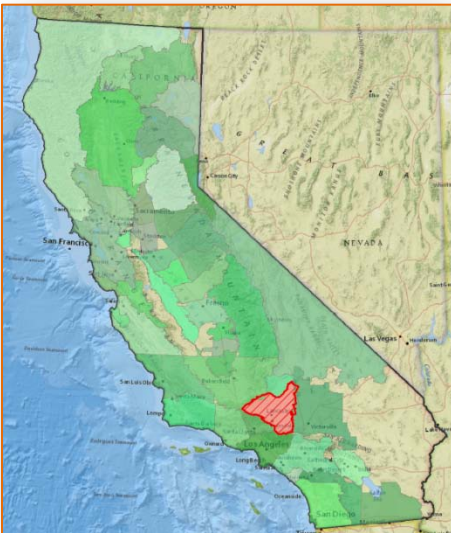


The IRWM Program organizes the State into Regions based on shared challenges & responsibilities

The Antelope Valley is one of 48 regions in the State of California. Regions are defined as contiguous geographic areas encompassing the service areas of multiple local agencies, and are defined to maximize the opportunities to

integrate water management activities. Each region is self defined, and is approved by the California Department of Water Resources. Approved Regions are eligible to apply for grant funding.

The Antelope Valley Region encompasses approximately 2,400 sq miles in northern Los Angeles County, southern Kern County, and western San Bernardino County.



Numerous Antelope Valley stakeholders have been engaged in the Program since 2006

Leaders and agencies in the Antelope Valley joined together to form a Regional Water Management Group (RWMG):



Other stakeholders also participate in the Antelope Valley IRWM process:

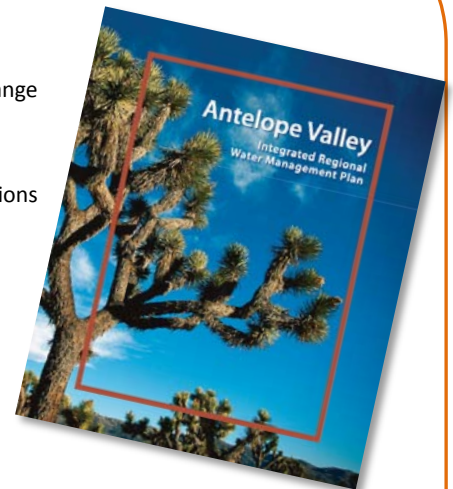
- Antelope Valley Board of Trade
- Antelope Valley Conservancy
- Antelope Valley Resource Conserv. District
- Antelope Valley United Water Purveyors
- Building Industry Association
- California Dept. of Fish & Game
- California Dept. of Public Health
- California Dept. of Water Resources
- CA State Water Resources Control Board
- California State Parks
- City of Boron
- City of California City
- Edwards Air Force Base
- Kern County Board of Supervisors, Dist. 2
- Kern County Farm Bureau
- Kern County Planning Department
- Lahontan Reg. Water Qual. Control Board
- Lake Los Angeles Town Council
- Leona Valley Town Council
- LA County Board of Supervisors
- LA County Dept. of Public Works
- LA County Dept. of Regional Planning
- LA County Farm Bureau
- Mojave Desert Mountain Resource Conservation and Development Council
- National Education Association
- National Resources Conservation Service
- Roosevelt Town Council
- Sierra Club
- Sundale Mutual
- U.S. Department of Agriculture
- Westside Park
- White Fence Farms

Stakeholders have collaborated to develop water management objectives, to develop projects, and to write an IRWM Plan that is periodically updated

The Region's objectives help to manage current and future resources.

- Water Supply
- Water Quality
- Flood Management
- Environmental Resources Management
- Land Use Planning/ Management
- Climate Change

- Provide reliable water supply and adapt to climate change
- Establish a supply contingency plan
- Stabilize groundwater levels
- Meet regulatory requirements and customer expectations
- Protect and maintain aquifers
- Protect streams and recharge areas
- Maximize beneficial use of recycled water
- Reduce negative impacts of stormwater, urban runoff, and nuisance water
- Preserve open space and natural habitats, and enhance water resources and species in the Region
- Maintain agricultural land use
- Meet growing demand for recreational space
- Improve integrated land use planning
- Mitigate against climate change



BECOME AN IRWM STAKEHOLDER!
Please visit www.avwaterplan.org or contact the Los Angeles County Department of Public Works at (626) 300-3353 for stakeholder meeting information.