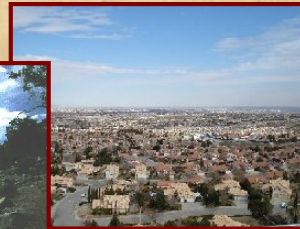
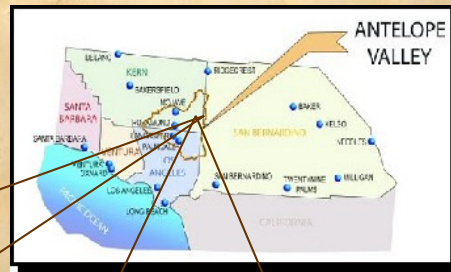


Hello. This presentation has been created to introduce you to the Antelope Valley Water Plan, A.K.A. the Antelope Valley Integrated Regional Water Management Plan (IRWMP). It is meant to give some background information about the Antelope Valley and an overview about what an IRWMP is and the goals and benefits of regional water planning.

ANTELOPE VALLEY

- 2400 Square Miles
- Comprised of Kern, Los Angeles, & San Bernardino Counties
- Triangular-shaped, Closed Basin

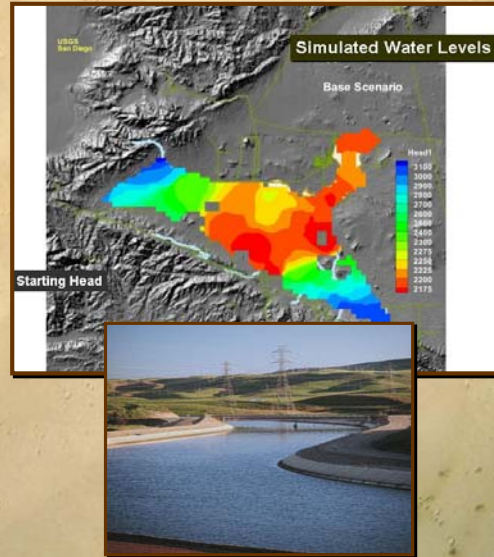


www.avwaterplan.org

The Antelope Valley Region is a rich landscape of varying agricultural, natural, and urban resources. The region spans about 2400 square miles and includes portions of Kern, Los Angeles, and San Bernardino Counties. It is triangular and is a hydraulically-closed basin which means, simply, that water entering the Antelope Valley does not leave the region naturally. It either evaporates, seeps into the ground, or is transported somewhere else.

IMBALANCE: Supply

- Limited Water Supply
 - Limited Groundwater Supply
 - Lack of Reliable Imported Water
 - Water Quality Issues
 - Lack of Storage Capacity (Tanks, Facilities, etc...)



www.avwaterplan.org

However, within the Antelope Valley, there is a critical imbalance between water supply and water demand. Water is supplied to the region through two sources: 1) Groundwater and 2) Imported Water.

The groundwater is in limited supply, and there is not enough groundwater to meet the needs of our growing community. To illustrate this point, the picture in the upper right corner shows groundwater levels (or supply) over the region. The different colors represent different water levels, and the important thing to notice is that there is not one constant level for the entire region. The red areas have lower water levels and are located in the most populated area in the region. Simply put – with our expanding population, we can only pump so much water from our ground.

One answer to this problem might be to simply buy more imported water. The problem is that imported water is not reliable for two reasons: 1) we are allowed a fixed amount of water we can purchase and can only buy that amount, and 2) our existing water distribution system does not guarantee we can deliver more imported water even if it was available for purchase.

When these supply issues are combined with water quality problems like arsenic and other contaminants and a lack of storage facilities, the supply problems become limiting to our future.

IMBALANCE: Demands

- Regional Demands
 - Population Growth
 - Large Seasonal Use Fluctuations
 - Commercial & Industrial Development
 - Agricultural Needs
 - Water Recreation & Environment



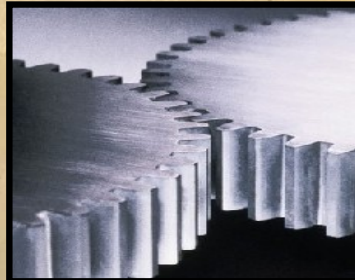
www.avwaterplan.org

Couple the supply problem with all of our supply needs, and it's easy to see the Antelope Valley needs more water than we have available, especially for the future.

And this imbalance will only increase over time... unless we do something about it now.

CHALLENGES

- Funding Limitations
- History of Regional Conflicts
 - Competition for Available Water Supplies
 - Single Agency or Single Purpose Perspective
 - Lack of Widespread Collaboration in Previous Efforts



www.avwaterplan.org

The water supply vs water demand issue is a big problem that requires big money and resources to address. As Mark Twain said, “Whiskey is for drinking. Water is for fighting about.” The Antelope Valley, like other areas, has a number of interested parties competing for limited water resources. Unfortunately, for this reason, it has also been difficult for different agencies to work together to find common solutions.

SOLUTION

- **Regional Planning**
- **Stakeholder Collaboration**
- **State Funding**
 - Proposition 50: \$64M
 - Proposition 84: \$1B
 - Proposition 1E: \$300M



www.avwaterplan.org

What is the solution to these obstacles?

Regional planning and stakeholder collaboration allow for efficient planning for the Antelope Valley. Working together allows for better ideas and better opportunities for the region. Also, the solutions to solve these large problems require a lot of money, and grant funding can provide much needed assistance for our region to begin closing the gap on these water problems.

AV WATER PLAN

Antelope Valley Integrated Regional Water Management Plan (IRWMP)

- Key Initiative of the California Water Plan
- Water Management Actions & Issues Are Interconnected
- IRWM Promotes a Sustainable, Efficient Approach to Water Management by Bringing Together Stakeholders, Interests, Issues, & Solutions



www.avwaterplan.org

The solution IS the IRWMP. But... what's an IRWMP??? IRWMP means Integrated Regional Water Management Plan, but while IRWMP is the technical name, you only need to know that the Antelope Valley Water Plan is a way to make sure that great projects are funded and built in our area to give us the best possible future. As the bottom picture illustrates, water issues - from drinking and irrigating water supply, to flooding from storms, to agricultural needs, to natural habitat and open space improvements – are ALL interconnected to one another. The IRWMP process recognizes that, and it is the way to get where we want to be in the future.

GOALS

- **To Develop a Comprehensive Plan That Will**
 - Address Water Supply Needs
 - Protect Water Quality
 - Protect the Environment
 - Improve Quality of Life
 - Provide Flood Management
 - Monitor Progress of Objectives
 - Ensure Future SMART Growth
- **To Provide A Framework for Agencies to Integrate Overlapping Programs & Projects**

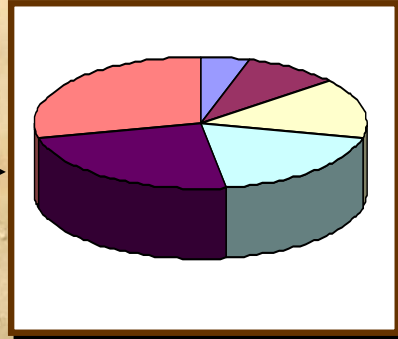
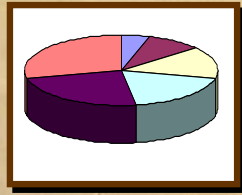


- **To Foster Coordination, Collaboration, & Communication in the Antelope Valley Region**
- **To Improve Regional Competitiveness for Grant Funding**

www.avwaterplan.org

The goals of the Antelope Valley Water Plan are to make sure that this area has enough water to meet supply needs, to ensure that our drinking water is of the highest quality, to prevent flooding, and to protect our environment while making the most efficient use of the resources we have. We want the plan to be a collection of ideas from all stakeholders and to include the best projects in the most effective and resourceful way. We also want to make sure we can be successful in competing for State grant funding to assist us in developing projects.

GOALS (Cont'd)



- **To Increase All Portions of the Water Supply Pie By Leveraging Grant Opportunities (Dependent Upon Regional Cooperation)**

www.avwaterplan.org

An important note to add is that the water supply goal of this Regional Water Plan is to increase the amount of water available to ALL groups in the region. For the purposes of this Plan, we aren't interested in deciding who gets what in terms of water. We want EVERYONE to get MORE. More water. More funding to support the regional projects that will bring in more water.

WHO IS PARTICIPATING?

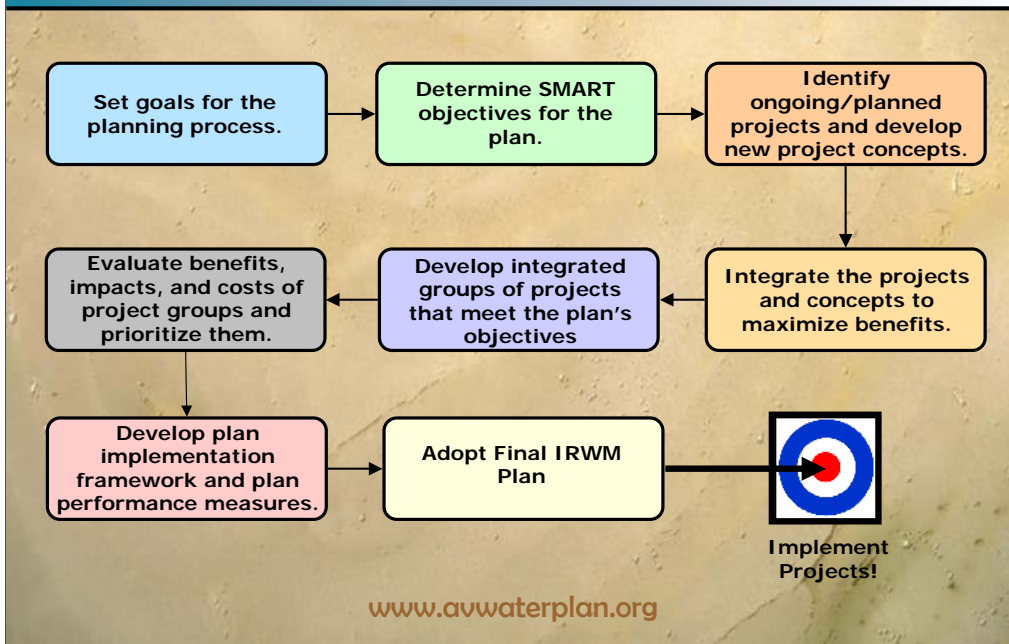
- Antelope Valley Board of Trade
- Antelope Valley Conservancy
- Antelope Valley-East Kern Water Agency
- Antelope Valley State Water Contractors Association
- Antelope Valley Resource Conservation District
- Antelope Valley United Water Purveyors
- Building Industry Association - Antelope Valley Chapter
- California Department of Fish & Game
- California Department of Health Services
- California Department of Water Resources
- California Regional Water Quality Control Board
- California State Parks
- City of Boron
- City of California City
- City of Lancaster
- City of Palmdale
- Edwards Air Force Base
- Kern County Board of Supervisors, District 2
- Kern County Farm Bureau
- Kern County Planning Department
- Lahontan Regional Water Quality Control Board
- Leona Valley Town Council
- Littlerock Creek Irrigation District
- Los Angeles County Board of Supervisors Office, District 5
- Los Angeles County Department of Public Works, Watershed Management Division
- Los Angeles County Department of Regional Planning
- Los Angeles County Farm Bureau
- Los Angeles County Sanitation Districts #14 & #20
- Los Angeles County Waterworks District #40, Antelope Valley
- Mojave Desert Mountain Resource Conservation and Development Council
- Mutual Water Companies
- National Education Association, Antelope Valley
- National Resource Conservation Service
- Palmdale Water District
- Quartz Hill Water District
- Rosamond Community Services District
- Roosevelt Town Council
- Sierra Club
- Sundale Mutual Water
- Sun Village Town Council
- Tybri Corporation at Edwards Air Force Base
- U.S. Department of Agriculture
- Westside Park Mutual Water Company
- White Fence Farms Mutual Water Company

And Growing...

www.avwaterplan.org

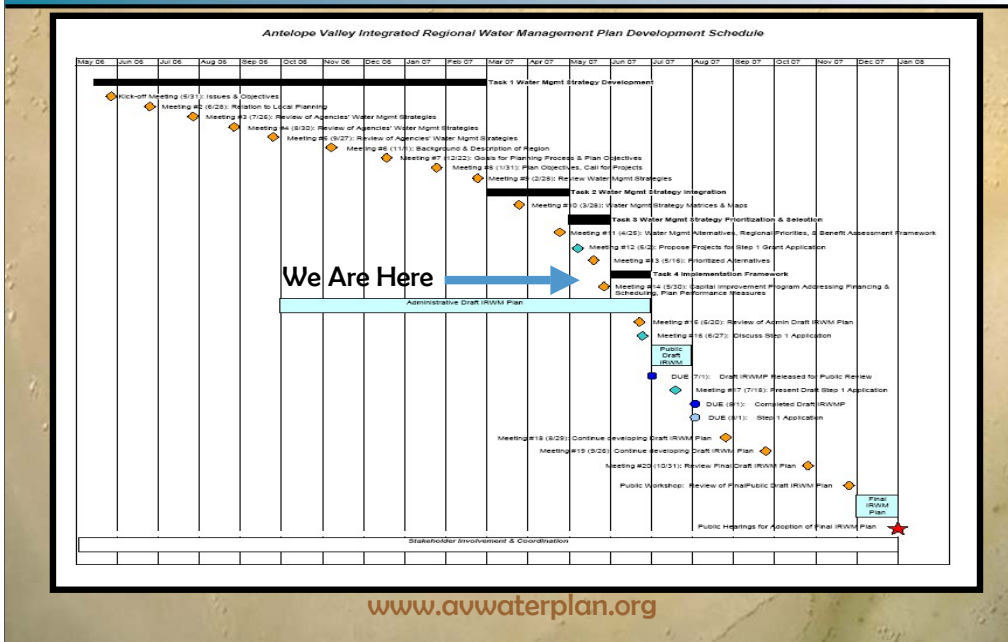
Who is participating so far? Currently, the IRWMP, or Antelope Valley Water Plan, includes participants ranging from Farming Organizations, Local and State Agencies, Sanitation Districts, Water Agencies, Cities, Community Groups, Town Councils, and the list continues to grow...

IRWMP PROCESS



Although this process looks complicated, it is important to note that we are currently in the middle row. We have set our goals and determined our objectives while identifying projects for the region. Now, we are reviewing and trying to integrate those projects to make them more efficient, resourceful, and beneficial to the Antelope Valley.

NEW SCHEDULE



Please don't bother trying to read the details on this milestone chart. This simply shows that we've been working on this plan for a while – since May of 2006. But if you notice, we're only about halfway through. We will submit a draft for Public Review in July, and then we will incorporate all the input we received to enhance our plan.

WHAT CAN YOU DO?



- Attend Future Plan Meetings
- Visit the AV Water Plan Website
- Provide Feedback About the Plan
- Suggest Helpful Contacts
- Tell Us How To Better Involve Your Community
- Spread the Word!



www.avwaterplan.org

Please join us in shaping a Plan that will help the Antelope Valley. To be successful, the Plan must include issues that are important to you and projects that you can support. Join us at our meetings, talk to your neighbors, and be part of the process.

SUPPORT

California Rural Legal Assistance <http://www.crla.org>

- Provides legal assistance and community education to rural farm working communities on environmental and social issues.

California Rural Water Association <http://www.calruralwater.org/>

- Provides technical assistance and training to rural water and wastewater systems.

California State Water Resources Control Board <http://www.waterboards.ca.gov/lahontan/>

- Provides resources to assist disadvantaged communities formulate and document project ideas and grant proposals

Center for Race, Poverty and the Environment <http://www.crpe-ej.org/>

- Provides litigation and technical assistance to communities facing environmental health and justice issues.

Natural Resources Conservation Services <http://www.nrcs.usda.gov/>

- Offers erosion control and fire restoration advice in the Antelope Valley.

Rural Community Assistance Corporation <http://www.rcac.org/>

- Provides technical assistance, training and resources on a variety of issues rural communities may face.

Technical Outreach Services for Native American Communities (TOSNAC)

<http://bridge.ecn.purdue.edu/~tosnac/>

- Provides resources and technical support to increase Native American involvement in Environmental Issues.

www.avwaterplan.org

In addition to the technical assistance available by participating in the Antelope Valley Water Plan, there are a number of helpful organizations available to assist your community. Specifically, a representative from the California State Water Resources Control Board, Cindy Wise, is available to assist communities in developing project ideas for community improvements. Her phone number is (530) 542-5408, and her email address is cwise@waterboards.ca.gov.

QUESTIONS?



*What will you do to help preserve
our water?*

www.avwaterplan.org

Thank you! Any Questions?

Please visit our website for more information.

You can also contact Melinda Barrett at (626) 300-3362 or Heather Gallardy
at (626) 300-3324.