

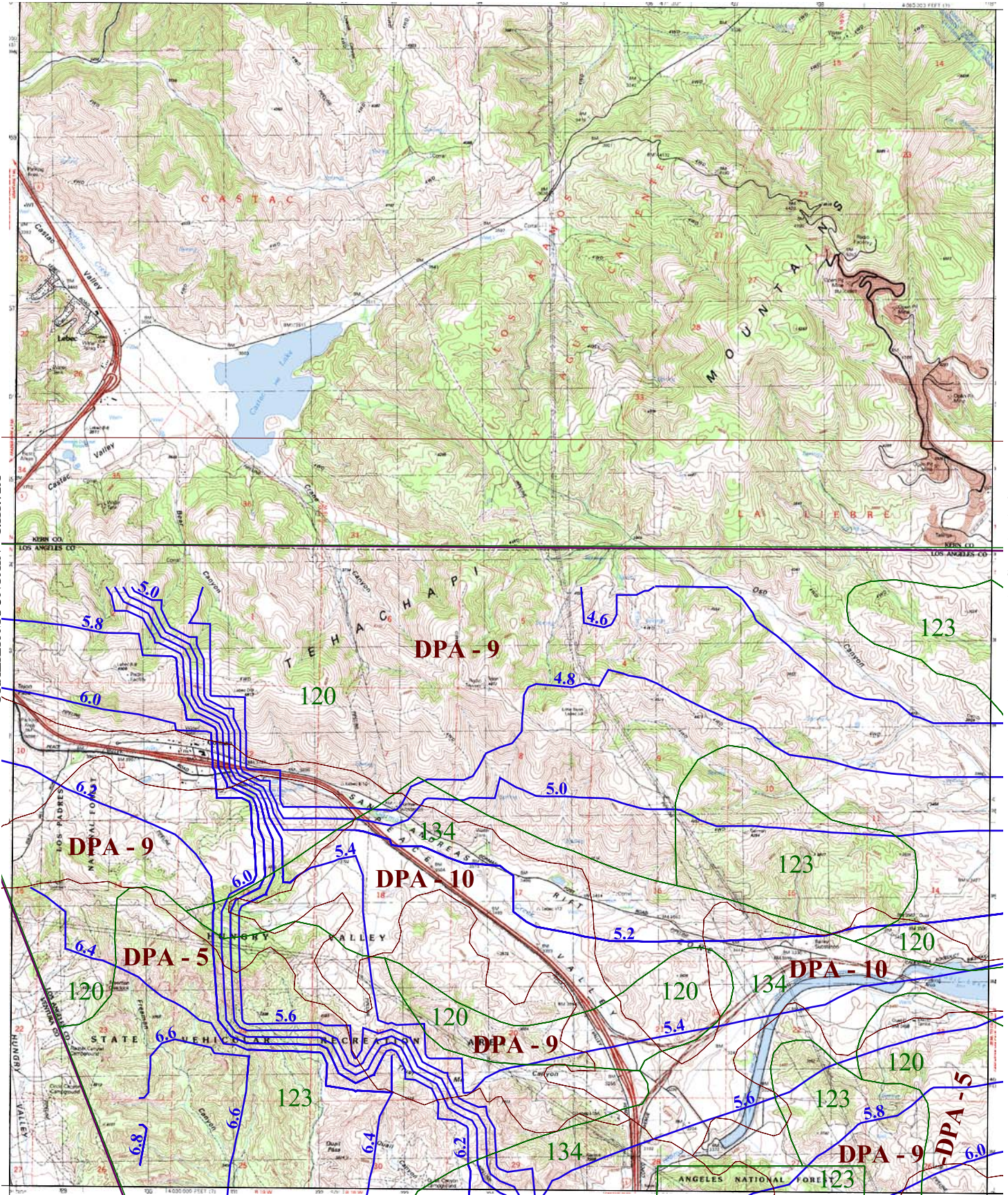
34° 52' 30"

PASTORIA CREEK

-118° 52' 30"

FRAZIER MOUNTAIN 1-H1.72A

LA LIEBRE RANCH 1-H1.73



-118° 45' 00"

BLACK MOUNTAIN 1-H1.62

34° 45' 00"



016

SOIL CLASSIFICATION AREA

7.2

INCHES OF RAINFALL

DPA - 6

DEBRIS POTENTIAL AREA

1 0 1 2 Miles

25-YEAR 24-HOUR ISOHYET REDUCTION FACTOR: 0.878
10-YEAR 24-HOUR ISOHYET REDUCTION FACTOR: 0.714

LEBEC
50-YEAR 24-HOUR ISOHYET

1-H1.72

