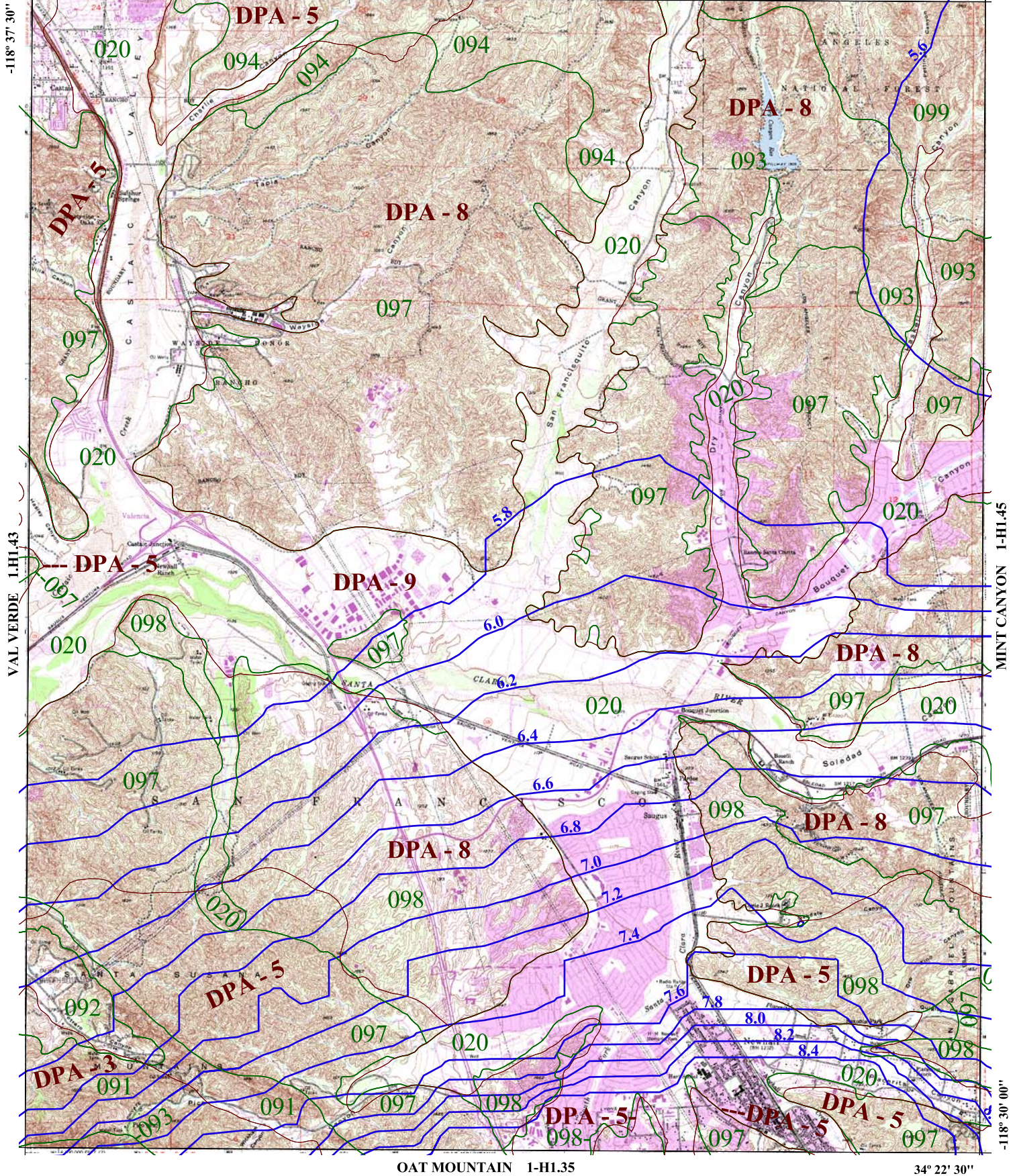


34° 30' 00"

WARM SPRINGS MOUNTAIN 1-H1.53



OAT MOUNTAIN 1-H1.55

34° 22' 30"



016

SOIL CLASSIFICATION AREA

7.2

INCHES OF RAINFALL

DPA - 6

DEBRIS POTENTIAL AREA

1 0 1 2 Miles

25-YEAR 24-HOUR ISOHYET REDUCTION FACTOR: 0.878  
10-YEAR 24-HOUR ISOHYET REDUCTION FACTOR: 0.714

**NEW HALL**  
**50-YEAR 24-HOUR ISOHYET**

**1-H1.44**

