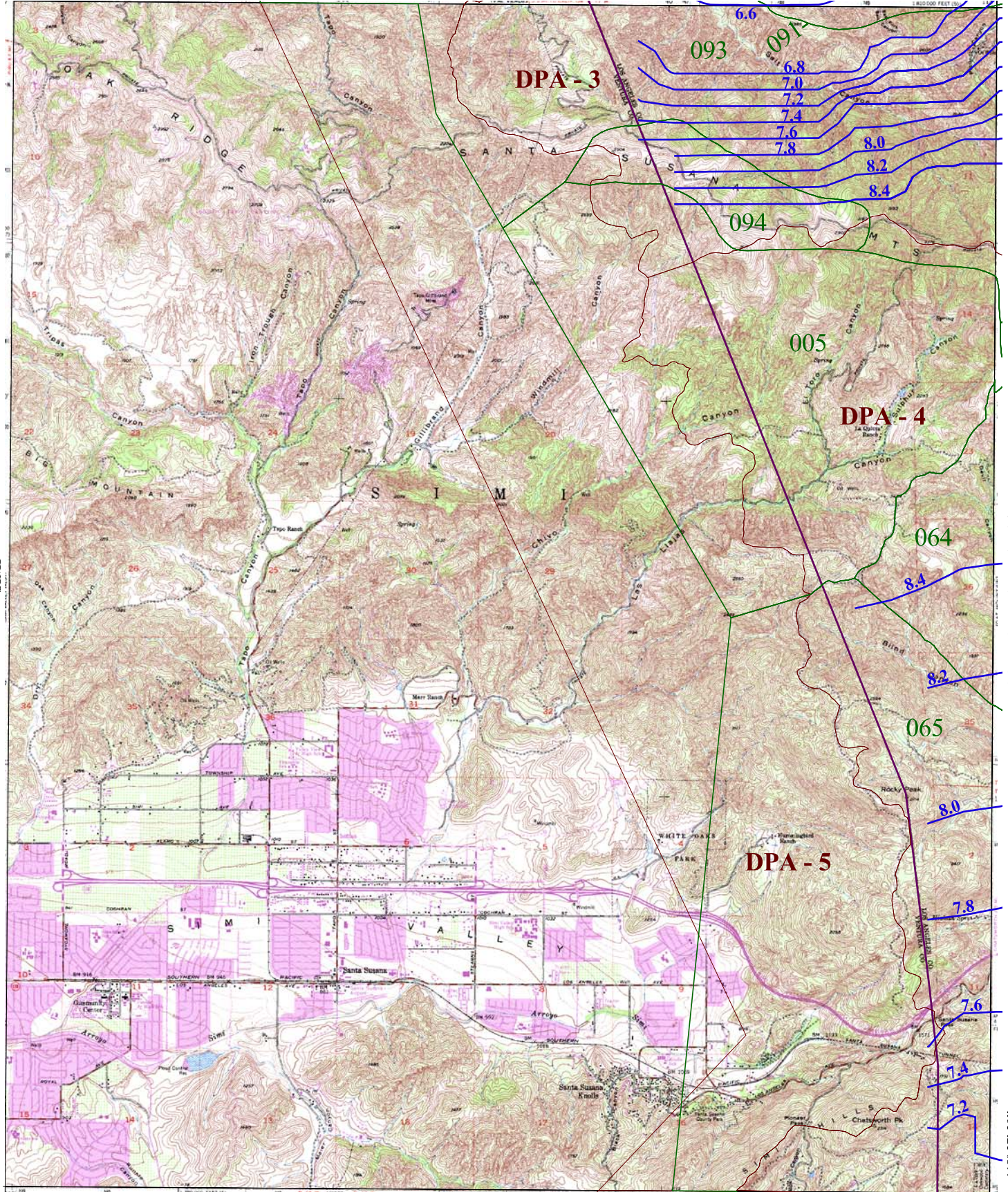


34° 22' 30"

VAL VERDE 1-H1.43

-118° 45' 00"

SIMI



OAT MOUNTAIN 1-H1.35

-118° 37' 30"

CALABASAS 1-H1.25

34° 15' 00"



016 SOIL CLASSIFICATION AREA

7.2 INCHES OF RAINFALL

DPA - 6 DEBRIS POTENTIAL AREA

1 0 1 2 Miles

25-YEAR 24-HOUR ISOHYET REDUCTION FACTOR: 0.878
10-YEAR 24-HOUR ISOHYET REDUCTION FACTOR: 0.714

SANTA SUSANA
50-YEAR 24-HOUR ISOHYET

1-H1.34

