

34° 07' 30"

VAN NUYS 1-H1.27

-118° 30' 00"

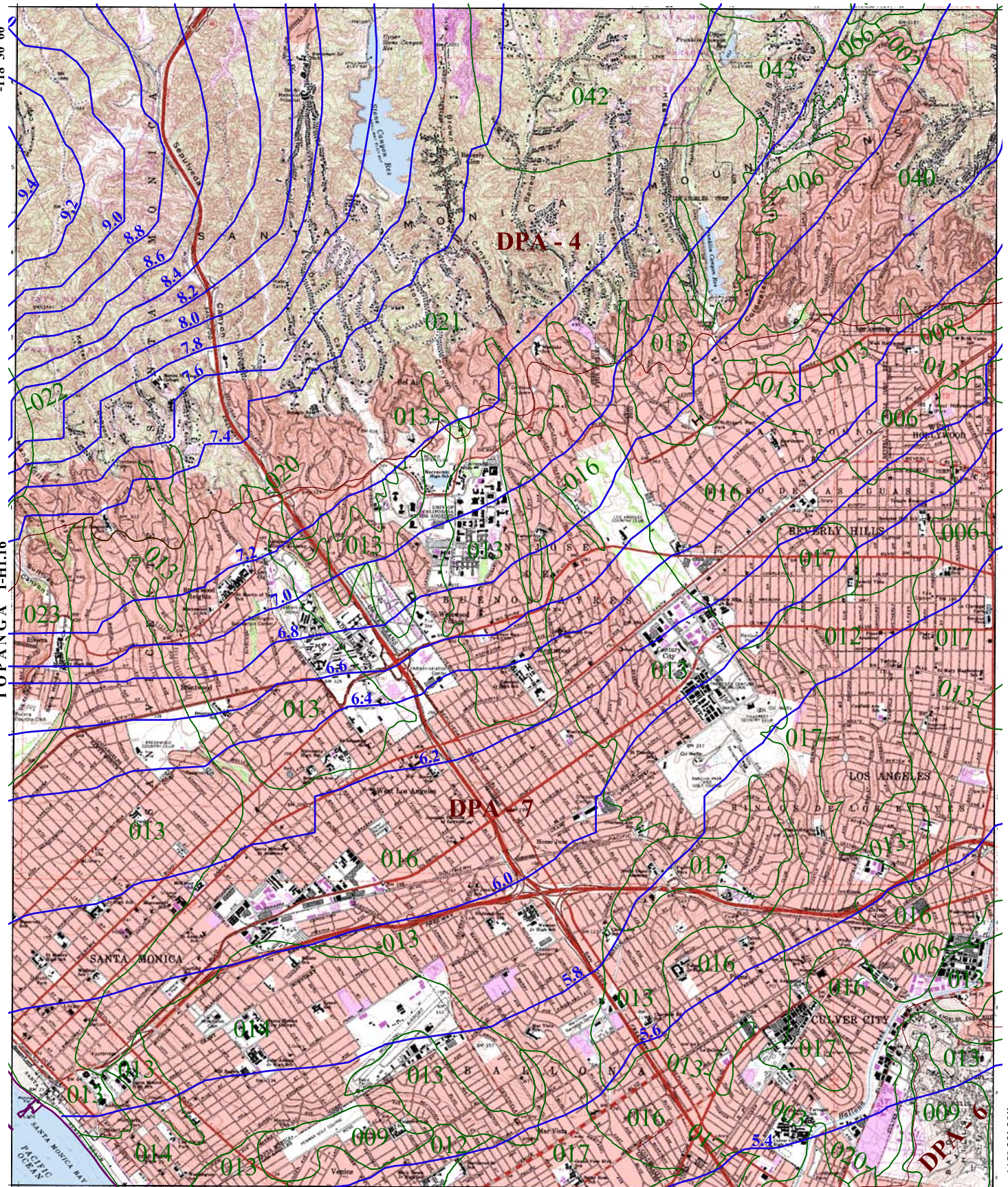
TOPANGA 1-H1.16

HOLLYWOOD 1-H1.18

-118° 22' 30"

VENICE 1-H1.7

34° 00' 00"



016

SOIL CLASSIFICATION AREA

7.2

INCHES OF RAINFALL

DPA - 6

DEBRIS POTENTIAL AREA

1 0 1 2 Miles

25-YEAR 24-HOUR ISOHYET REDUCTION FACTOR: 0.878
10-YEAR 24-HOUR ISOHYET REDUCTION FACTOR: 0.714

BEVERLY HILLS 50-YEAR 24-HOUR ISOHYET

1-H1.17

