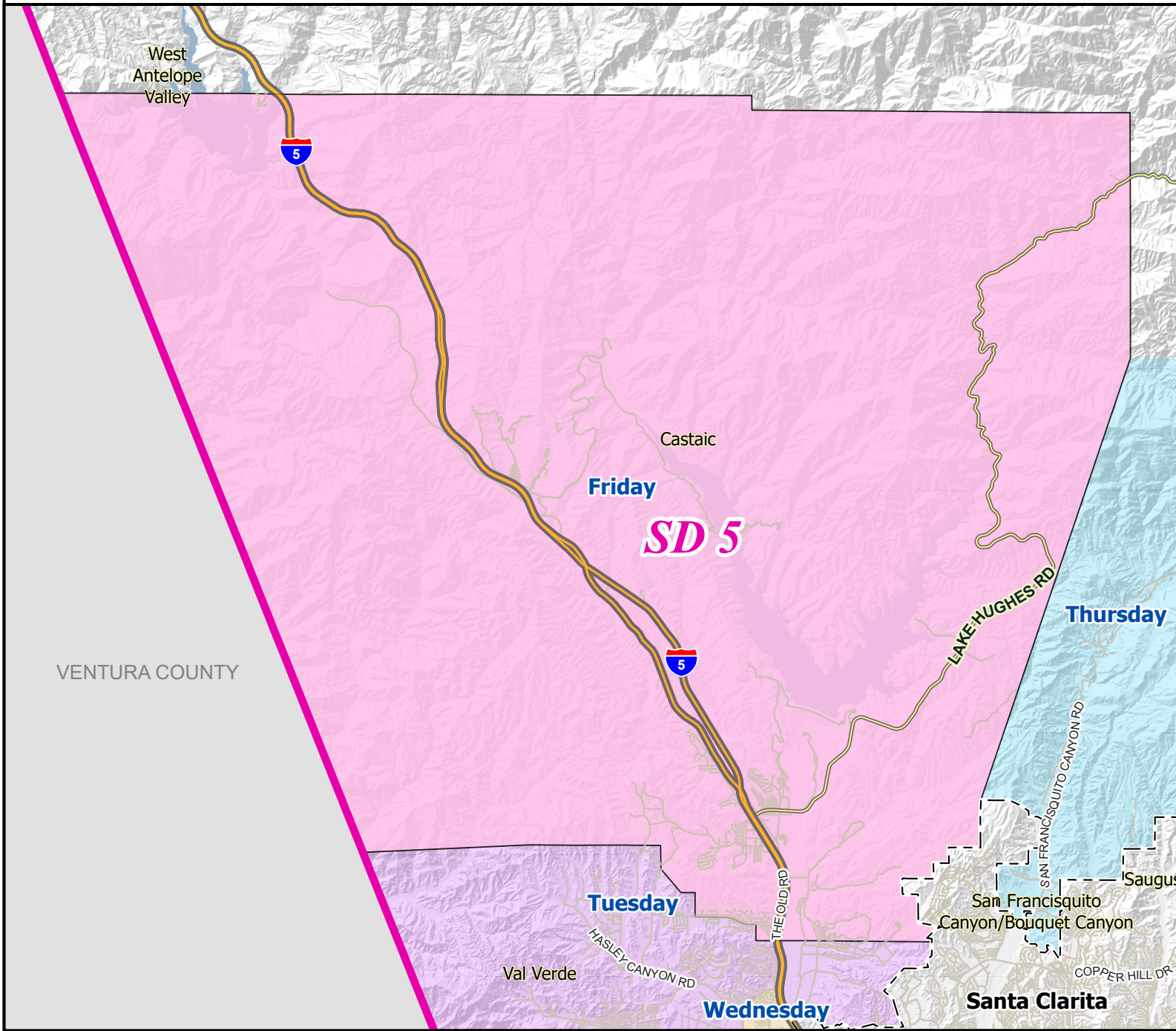
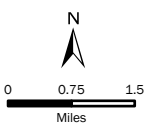


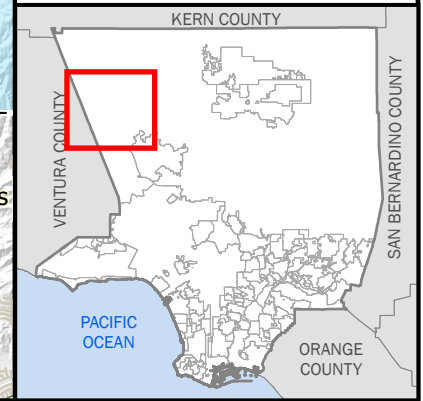
Santa Clarita Valley Residential Trash Collection Schedule



- City Boundary
- Supervisorial District
- Trash Collection**
- Friday

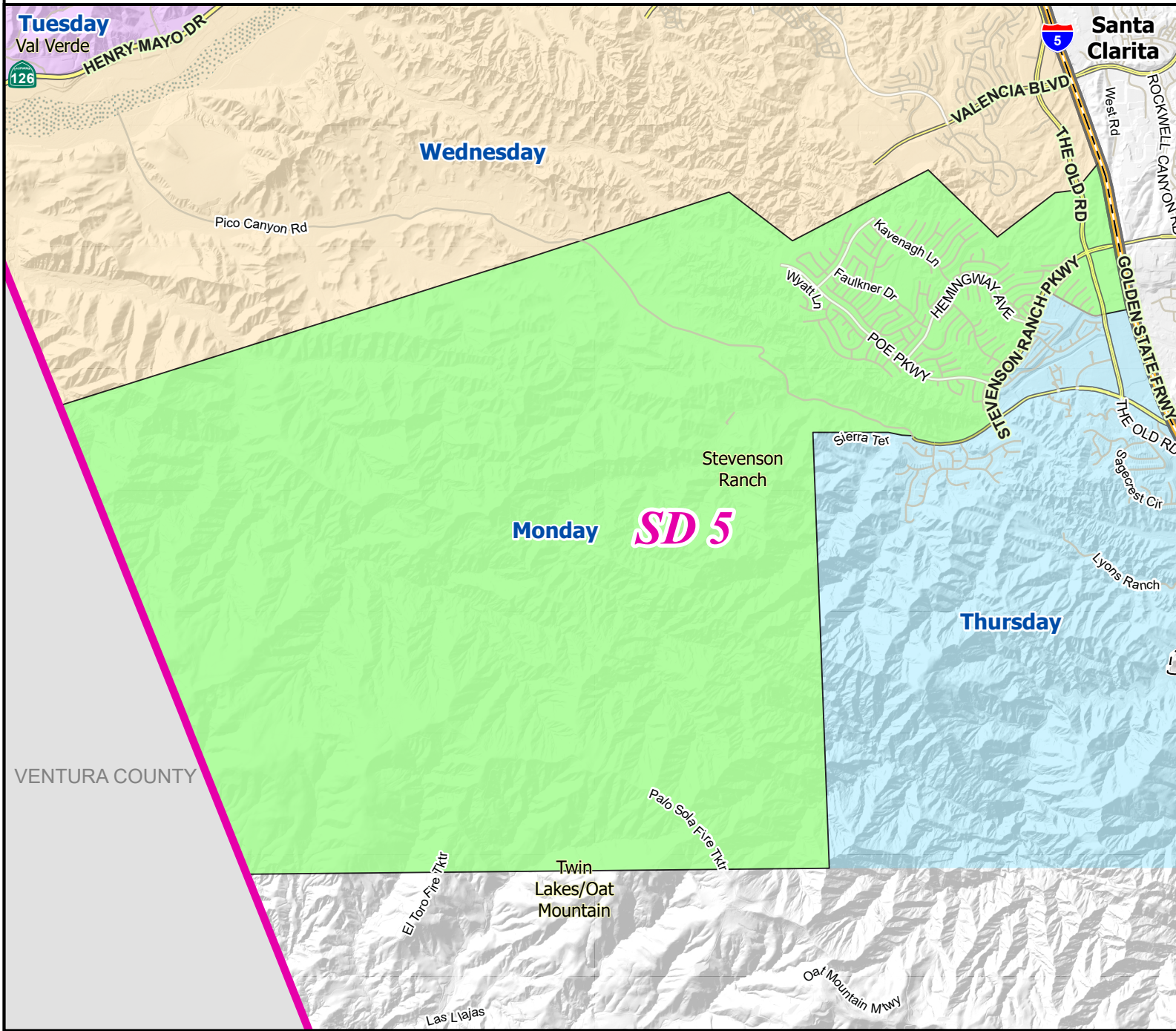


Date: 12/31/2025
 SMPM Division, Mapping & GIS Services
 Section (mthong)
 Data from eGIS Repository and Public Works.
 This map is for informational purposes only
 and should not be used for legal, engineering,
 or surveying.



VENTURA COUNTY

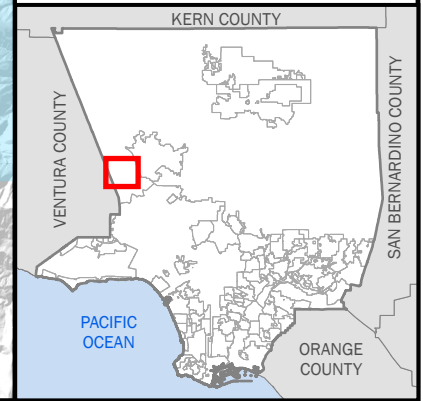
Santa Clarita Valley Residential Trash Collection Schedule



City Boundary
 Supervisorial District
Trash Collection
 Monday

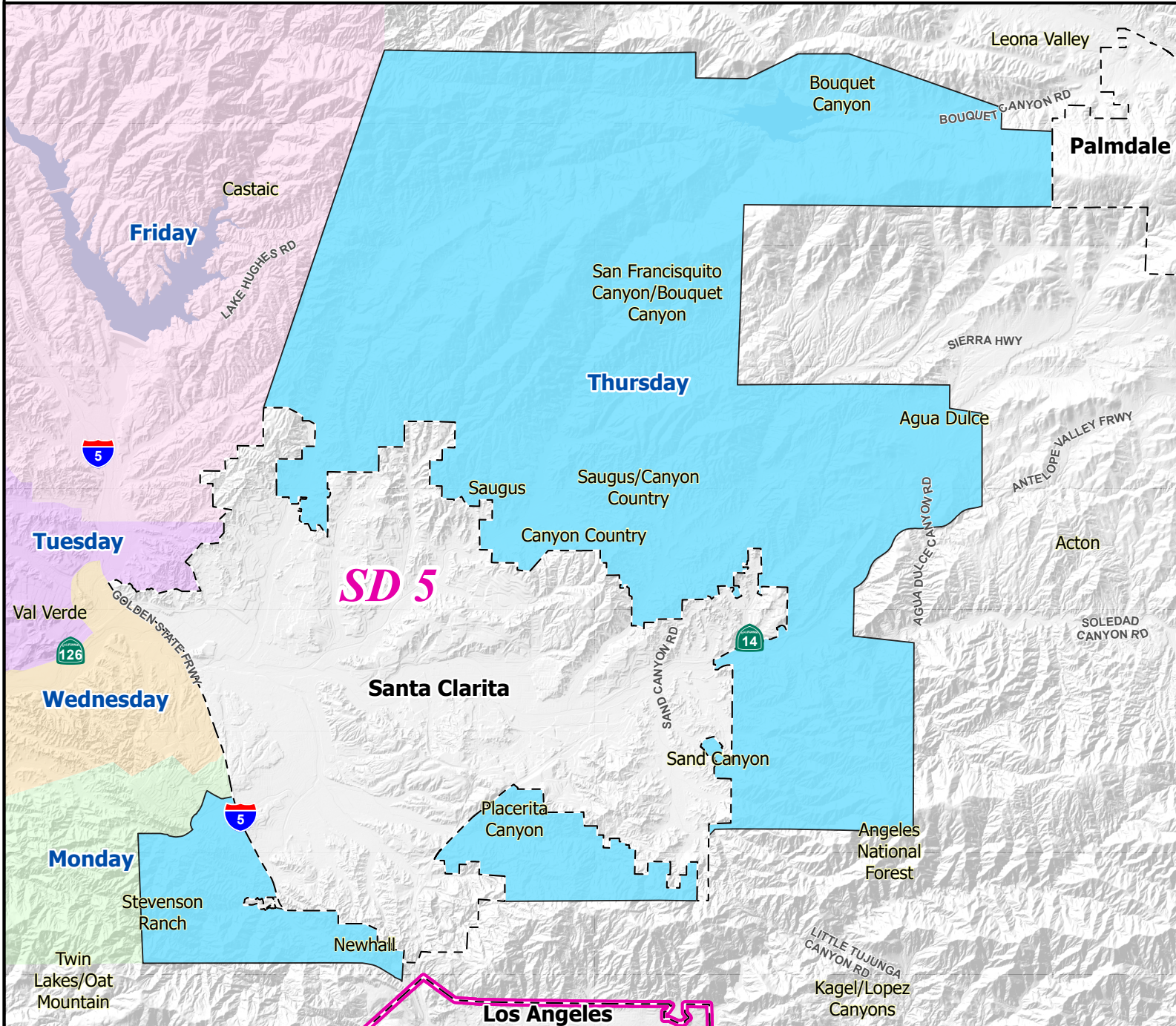


Date: 12/31/2025
 SMPM Division, Mapping & GIS Services
 Section (mthong)
 Data from eGIS Repository and Public Works.
 This map is for informational purposes only
 and should not be used for legal, engineering,
 or surveying.

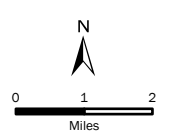


VENTURA COUNTY

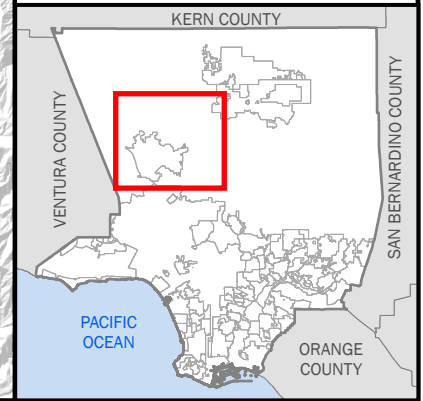
Santa Clarita Valley Residential Trash Collection Schedule



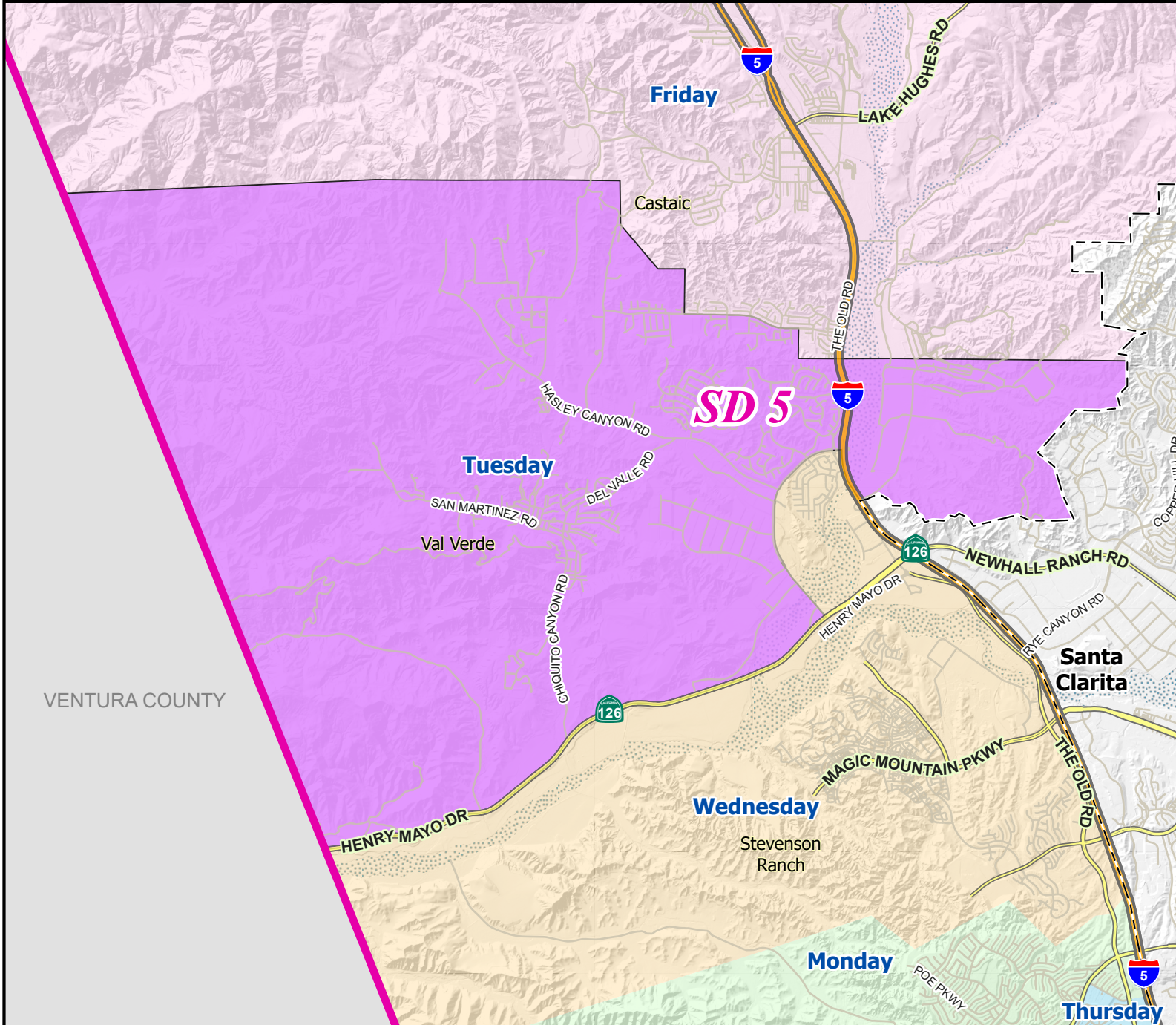
City Boundary
 Supervisory District
Trash Collection
 Thursday



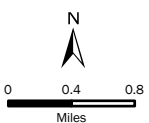
Date: 12/31/2025
 SMPM Division, Mapping & GIS Services
 Section (mthong)
 Data from eGIS Repository and Public Works.
 This map is for informational purposes only
 and should not be used for legal, engineering,
 or surveying.



Santa Clarita Valley Residential Trash Collection Schedule



- City Boundary
- Supervisorial District
- Trash Collection**
- Tuesday

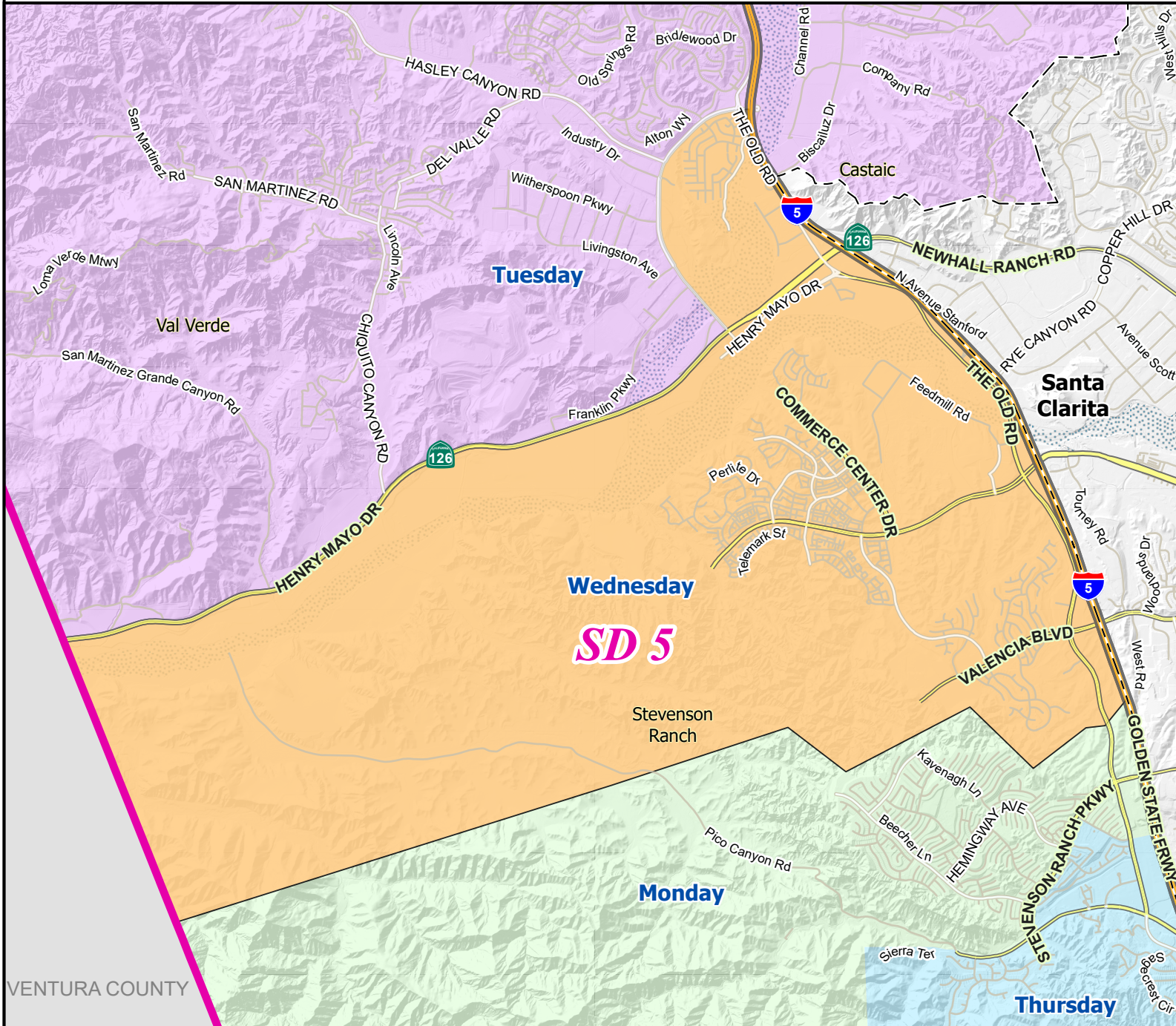


Date: 12/31/2025
 SMPM Division, Mapping & GIS Services
 Section (mthong)
 Data from eGIS Repository and Public Works.
 This map is for informational purposes only
 and should not be used for legal, engineering,
 or surveying.

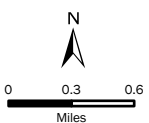
VENTURA COUNTY



Santa Clarita Valley Residential Trash Collection Schedule



- City Boundary
 - Supervisorial District
- ### Trash Collection
- Wednesday



Date: 12/31/2025
 SMPM Division, Mapping & GIS Services
 Section (mthong)
 Data from eGIS Repository and Public Works.
 This map is for informational purposes only
 and should not be used for legal, engineering,
 or surveying.



VENTURA COUNTY